

ELECTRIC ROUGH TERRAIN SCISSOR LIFTS

1323RE (4389RE)

Compliance with AS 1418 · 10 standards

PRODUCT HIGHLIGHTS

Excellent Performance

- Powerful platform capacity for unprecedented efficiency
- Two-way extendable platform, spacious working platform
- Wide-angle tilt, one-click outrigger leveling

Strong Off-road Performance

- Up to 40% gradeability, easily handling outdoor needs
- Stable movement, copes well with potholed ground

Easy Maintenance

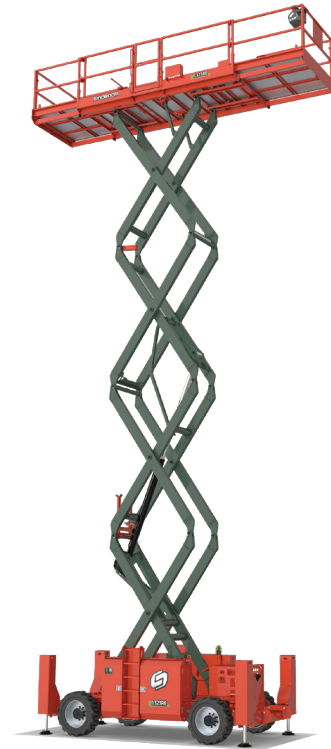
- Integrated pipeline assembly, convenient for troubleshooting
- Double-door design for easy maintenance, spacious area for maintenance

Green

- Comfortable working environment without noise pollution
- Meet indoor or emissions-critical site requirements

Economical

- Battery quality assurance, low failure rate and reduced maintenance costs compared with diesel power, which reduces overall operating cost



Standard Features

4WD×2WS	Oscillating axle	Telematic ready
Non-marking tires	Forklift pockets and lifting points	Battery isolator
Emergency stop	Proportional control	Secondary guarding system
Flashing beacon	Emergency lowering system	White noise alarm
Manual storage box	Pipe rack ready	weight management system
Lithium Batteries		

Options & Accessories

Wheel nut indicators	Panel lifting system	Telematic device
Fire extinguisher/Bracket	Mine spec	Platform work light
Pipe lifting system	AC power to platform	

SINOBOOM™

PARTNERS IN ACCESS™

🌐 SINOBOOM.AU | 📞 03 8905 1550

HO: BRISBANE – 39 ALTA ROAD, CABOOLTURE QLD 4510 | SYDNEY – 1/3 VOYAGER CT, GLENDENNING NSW 2761

MELBOURNE – 32-34 MARNI, DANDENONG SOUTH VIC 3175

ELECTRIC ROUGH TERRAIN SCISSOR LIFTS

1323RE (4389RE)

Compliance with AS 1418 · 10 standards

Model	1323RE (4389RE)
Dimensions	
Max Working Height	15.1 m (49'6.5")
A Max Platform Height	13.1 m (42'11.7")
B Max Horizontal Extension	1.5 m/1.2 m (4'11.1"/3'11.2")
C Length-Stowed (Outriggers)	4.88 m (16')
D Width-Stowed	2.28 m (7'5.7")
E Height-Stowed (Rail Folded)	2.2 m (7'2.6")
E Height-Stowed (Rail Unfolded)	2.96 m (9'8.5")
F Wheelbase	2.84 m (9'3.8")
Ground Clearance	0.36 m (1'2.2")
Platform Dimensions (L×W×H) (7.4m Platform)	4.84m×1.82m×1.1m (15'10.6"×6'×3'7")
Performance	
Platform Capacity	680 kg (1,499 lbs)
Extension Platform Capacity	227 kg (500 lbs)
Platform Allowable Occupants (Indoor/Outdoor)	7 Persons/7 Persons
Drive Speed (Stowed)	0~5.3 km/h (0~3.3 mph)
Drive Speed (Raised)	0~1.1 km/h (0~0.68 mph)
Lift Time (Unloaded)	50 s~60 s
Lower time (Unloaded)	34 s~44 s
Gradeability	40%
Tilt Rating (Front to Back, Outrigger Retracted/Extended)	3° /0.5°
Tilt Rating (Side to Side, Outrigger Retred/Extend)	2° /0.5°
Max Outrigger Leveling (Front to Back)	7°
Max Outrigger Leveling (Side to Side)	12°
Turning Radius (Inside/Outside)	2.2 m/5.3 m (7'2.6"/17'4.7")
Tire Spec/Type	33×12-20 /solid
Power	
Drive × Steer	4 WD×2 WS
Batteries	48 V,480 Ah (Lead-acid battery) 51.2 V,500 Ah (Lithium battery)
Hydraulic Tank Capacity	110 L (24 gal (UK)/29 gal (US))
System Voltage	48 V DC
Weight	
Weight (Without / With Range Extender)	7,970 kg (17,570 lbs) / 8,360 kg (18,430 lbs)
Standards Compliance	AS 1418 · 10

