

## ENGINE POWERED TELESCOPIC BOOM LIFTS

# TB14J PLUS (TB460J PLUS)

Compliant with AS 1418 · 10 standards

## PRODUCT HIGHLIGHTS

### Easy Transport

- The three-section boom design benefits machine transport, allowing one container and a low-bed trailer to transport 2 machine units due to its compact transport length of only 5.88m

### Heavy Load Capacity

- It inherits the perfect features of the Sinoboom Plus boom lifts series, with a leading three-stage heavy-load platform capacity of 454 kg when restricted, 340 kg and 250 kg when unrestricted. This capacity sets it apart from others in its class on the market

### Excellent Rough Terrain Performance

- The active oscillating function is a standard feature across Sinoboom boom lifts, including TB14J Plus. It allows the machine to work and travel both in boom stowed and raised status on uneven and rough terrain ground while always keeping all four wheels in contact with the ground, even when one wheel drops into a pothole. This provides high stability and work efficiency for users at job sites
- With powerful 4-wheel drive and a 40% gradeability, it allows for travel on large slopes on most job sites



### Proportional Controls

- The platform control box is equipped with 3 joysticks with full-proportional controls for boom lifting, telescoping, turntable rotation, and driving speed
- Operating with smooth starting and stopping will help you approach your job site target smoothly and precisely

#### Standard Features

4WD×2WS	Fault diagnosis system	Telematic ready
Hydraulic platform leveling	Display screen	Battery isolator
Flashing beacon	Emergency lowering system	Secondary guarding system
Proportional control	Weight management system	White noise alarm
Tilt protection system	Non-marking tires	Half-mesh for platform
Manual storage box	Generator	

#### Options & Accessories

Wheel nut indicators	Mine spec	Telematic device
Fire extinguisher/Bracket	AC power to platform	Driving lights
Pipe lifting system		

# SINOBOOM™

## PARTNERS IN ACCESS™

🌐 SINOBOOM.AU | 📞 03 8905 1550

HO: BRISBANE – 39 ALTA ROAD, CABOOLTURE QLD 4510 | SYDNEY – 1/3 VOYAGER CT, GLENDENNING NSW 2761

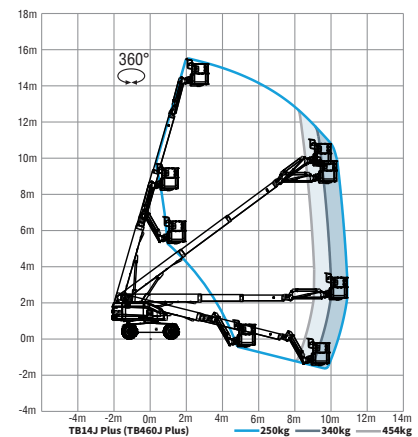
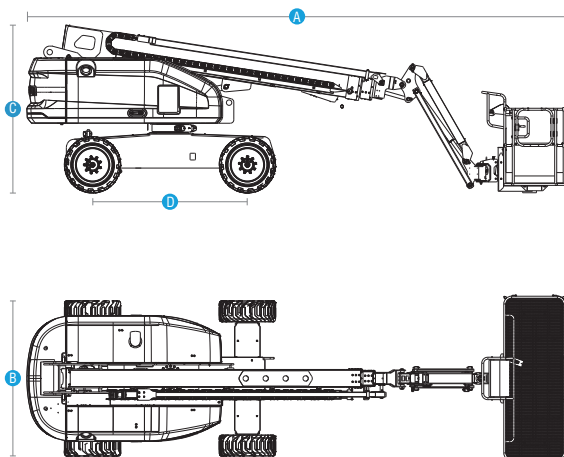
MELBOURNE – 32-34 MARNI, DANDENONG SOUTH VIC 3175

## ENGINE POWERED TELESCOPIC BOOM LIFTS

# TB14J PLUS (TB460J PLUS)

Compliant with AS 1418 · 10 standards

Model	TB14J PLUS (TB460J PLUS)
<b>Dimensions</b>	
Max Platform Height	14.1 m (46'3")
Max Working Height	16.1 m (52'10")
Max Horizontal Reach(Restricted/Restricted/Unrestricted)	9.1 m/10 m/10.9 m (29'10"/32'10"/35'9")
A Stowed Length	7.99 m (26'3")
B Stowed Width	2.3 m (7'6")
C Stowed Height	2.49 m (8'2")
Stowed Length (Transport)	5.88 m (19'3")
Stowed Width (Transport)	2.3 m (7'6")
Stowed Height (Transport)	2.81 m (9'3")
D Wheelbase	2.3 m (7'6")
Ground Clearance	0.35 m (1'1.8")
Platform Size (L×W×H)	2.44 m×0.91 m×1.1 m (8'×3'×3'7")
<b>Performance</b>	
Max Platform Capacity(Restricted/Restricted/Unrestricted)	454 kg/340 kg/250 kg (1,000 lbs/749 lbs/551 lbs)
Max Platform Occupants(Restricted/Unrestricted)	3 Persons/2 Persons
Drive Speed (Stowed)	0 ~ 5.5 km/h (0 ~ 3.42 mph)
Drive Speed (Raised)	0 ~ 1.1 km/h (0 ~ 0.68 mph)
Gradeability	40%
Turntable Rotation	360° /Continuous
Platform Rotation	160°
Tilt Rating	5°
Turning Radius (Inside/Outside)	1.82 m/4.78 m (6'/15'8")
Turntable Tail-Swing	0.98 m (3'3")
Max Allowable Side Force	400 N (90 lbf)
Max Allowable Wind Speed	12.5 m/s (28 mph)
Tire Spec/Type	33×12D610 (foam-filled)
<b>Power</b>	
Drive × Steer	4WD × 2WS
Engine	36 kW/2600 rpm/ V2403BM-DI-CT04/Kubota/ China IV
Hydraulic Tank Capacity	180 L (39.6 gal (UK)/47.6 gal (US))
Diesel Tank Capacity	140 L (30.8 gal (UK)/37 gal (US))
System Voltage	12 VDC
<b>Weight</b>	
Weight	7,560kg (16,667 lbs) (Engine power ≥ 36kw)
Standards Compliance	AS 1418 · 10



This document is provided for information purposes only and reflects product information available at the time of publication. Sinoboom Intelligent Equipment Pty Ltd reserves the right to change specifications, designs, and equipment without notice and makes no representations or warranties. Where indicated, AS-marked platforms conform to AS/NZS 1418.10:2011. Refer to the applicable Sinoboom Operating, Maintenance, and Parts Manuals for correct use and procedures. 03.2026