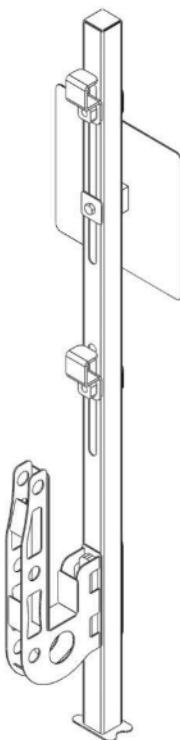




Operation Manual

Panel Lifting System



Assemble Kit No: Scissor Panel Lifting System
0608ME, 0808E, 812E, 1012E, 1212E, 1414E

Contents:

Introduction.....	3
Wind Force Hazards.....	5
Crushing Hazards.....	6
Recommended Machines.....	7
Rated Max Capacity.....	8
Installation Procedures.....	9
Operating Procedures.....	11
Decals.....	12

Introduction



Failure to read, understand and obey the safety rules will result in death or serious injury.

Do Not Operate Unless:

You learn and practice the principles of safe system operation contained in this operator's manual.

1. Avoid hazardous situations
2. Always pre-inspect system
3. Always perform function tests prior to use
4. Inspect and clear the workplace
5. Only use on recommended machines.

You read, understand and obey the manufacturer's instructions and safety rules and operator's manuals and system decals.






You read, understand and obey employer's safety rules and worksite regulations.

You read, understand and obey all applicable governmental regulations.

You are properly trained to safely operate the attachment on the recommended machines

Decal Legend:

Sinoboom decals use symbols, colour coding and signal words to identify the following:

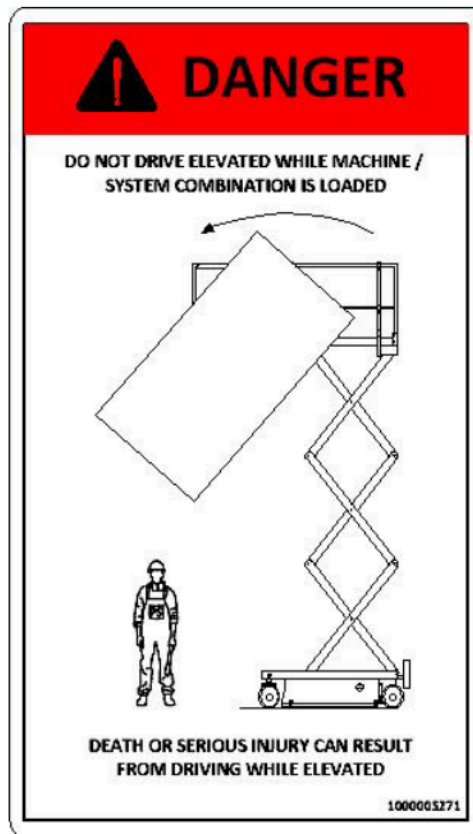
	Safety alert symbol – used to alert personnel to potential hazards. Obey all safety messages that follow this symbol to avoid possible injury or death.
	Red – used to indicate the presence of an imminently hazardous situation which, if not avoided, will result in death or serious injury.
	Orange – used to indicate the presence of a potential hazardous situation which, if not avoided, will result in death or serious injury.
	Yellow – Indicates a hazardous situation which, if not avoided, could result in minor or moderate injury.
	Green– Indicates a hazardous situation which, if not avoided, could result in property damage.

Wind Force Hazards



- 1- Do not operate machine outdoors with lifting system installed. Machine / system combination is for indoor use only.
- 2- Wind speed rating = 0m/sec

Crushing Hazards:



- 1- Do not drive the machine while elevated with the lifting system loaded. Ensure work area is clear of personal and equipment before any lifting operation.
- 2- When lifting system is loaded the only operational movement of the machine is raising, lowering and driving in the stowed position.

- 3- Do not use anything other than the lifting system to level the loads
- 4- Do not operate the machine unless the load is securely fitting into the lifting system.
- 5- Avoid debris and uneven surfaces
- 6- Always use gloves when setting up & operating the lifting system.
- 7- Lifting system shall be installed via a competent person as per the instructions listed

Recommended Machines:

This system is designed for Sinoboam machines only do not use on other manufacturers machines. Do not use this system on machines that are not listed below.

1- 0608ME, 808E, 812E, 1012E, 1212E, 1414E

Death or Serious injury will occur if the pipe lifting system is used on machines which are not listed within the manual.

Rated Max Capacity (RMC):

The panel lifting system operates categories for the correct identification of the system's rated max capacity (RMC). Use figure 1.1 below to identify the correct attachment RMC.


 INSTRUCTIONS			
RATED MAX CAPACITY CHART SCISSOR LIFTS (PANEL HEAD)			
MODELS	30KG	60KG	80KG
0608ME 80SE	●		
812E, 1012E			●
1212E & 1414E		●	
1000005273			

Figure 1.1

Note: Refer to manufacturer's operation manual & supporting decals for specific machine rated max capacity.

Note: System weight and rated max capacity of the lifting system shall be subtracted from the rated max capacity of the machine.

Specifications:

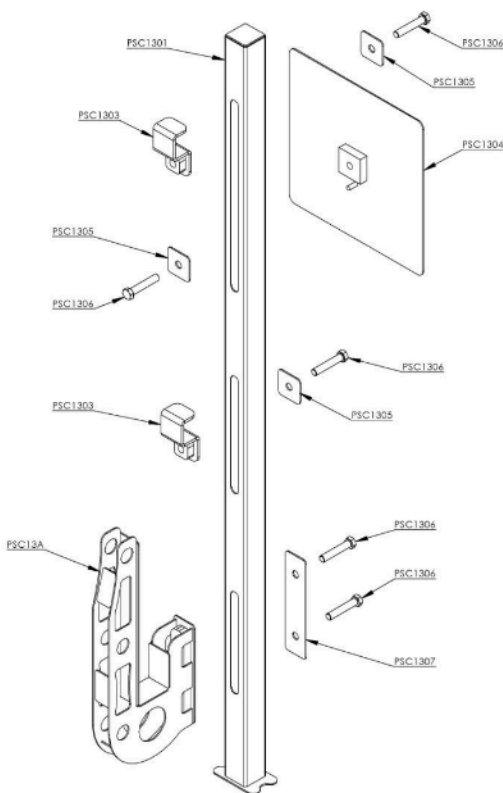
System weight (each)

8Kg / 17.6lbs (16Kg both)

Installation Procedures:

Assemble each system as per figure 1.2.

Figure-1.2



1. Ensure all bolts are fully secured to the system mounting posts
2. Position into machine. Foot pad should be sitting on the deck of the platform as weight is transferred to the floor deck instead of the hand rails.
3. Decal face plate shall be position towards the inside of the deck and placed towards the front of the machine.
4. Lift attachment should be secured to the side of scissor lift via the clamps provided with the kit. Min distance between posts for correct set-up is 850mm
5. At no stage are the lifting attachments to be located on the extension deck.

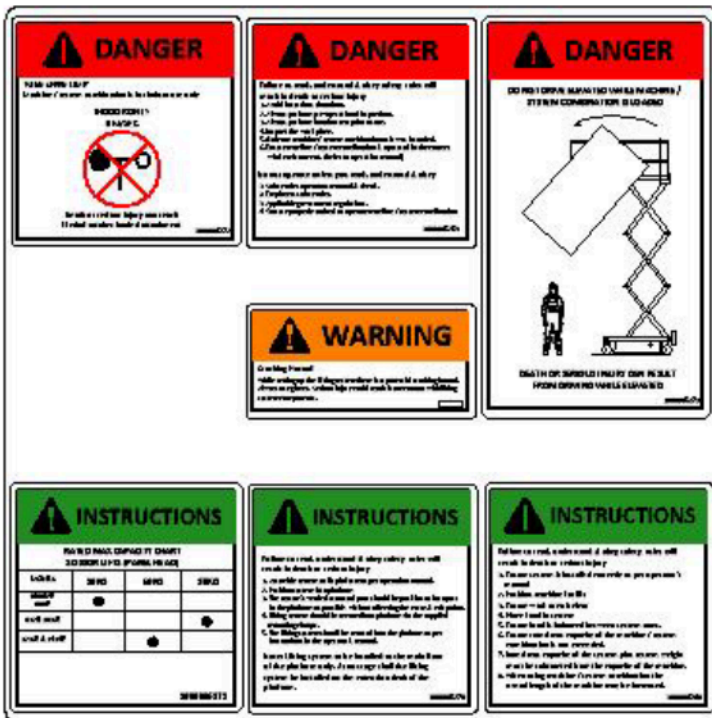
Operating Instructions:

Using the panel lifting system for anything other than its intended purpose is unsafe with death or serious injury possible.

1. Always use panel lifting system indoors on firm level surfaces
2. Ensure work area is clear
3. Position machine for lift
4. Place load into system
5. Ensure load is balanced between system arms
6. Confirm RMC of system via the chart within this manual.
7. Rated max capacity + system weight must be subtracted from the reduced RMC of the machine.
8. Never drive the machine elevated while system is loaded.
9. When using system it may increase the overall length of the machine. Allow for extra length when raising and lowering.
10. All works procedure must cease when wind speed exceeds 0m/sec.

Decals:

Use the appropriate information to verify that all decals are legible and in place.



Notes: